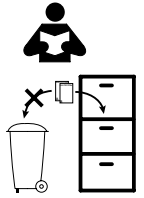


PANZERI

Astoria Out

9500-2/B-ST2-E



9500-2/B-ST2-E

USE

Suspended

Wall

Ceiling

CODE	L mm [ft]
9500-2/B-ST2-E	2000 [6.56]

1 - CEILING FIXING

With S-9500/114

9504/ST2-B

$\oplus T_c \text{ max: } 1 \text{ Nm}$

9504/ST2-B-F

$\oplus T_c \text{ max: } 1 \text{ Nm}$

$> \varnothing \text{ wire}$

250	500	500
[0.82']	[1.64']	[1.64']

$< 250 \text{ mm}$
 $< 9.84 \text{\"}$

$> 250 \text{ mm}$
 $> 9.84 \text{\"}$

4

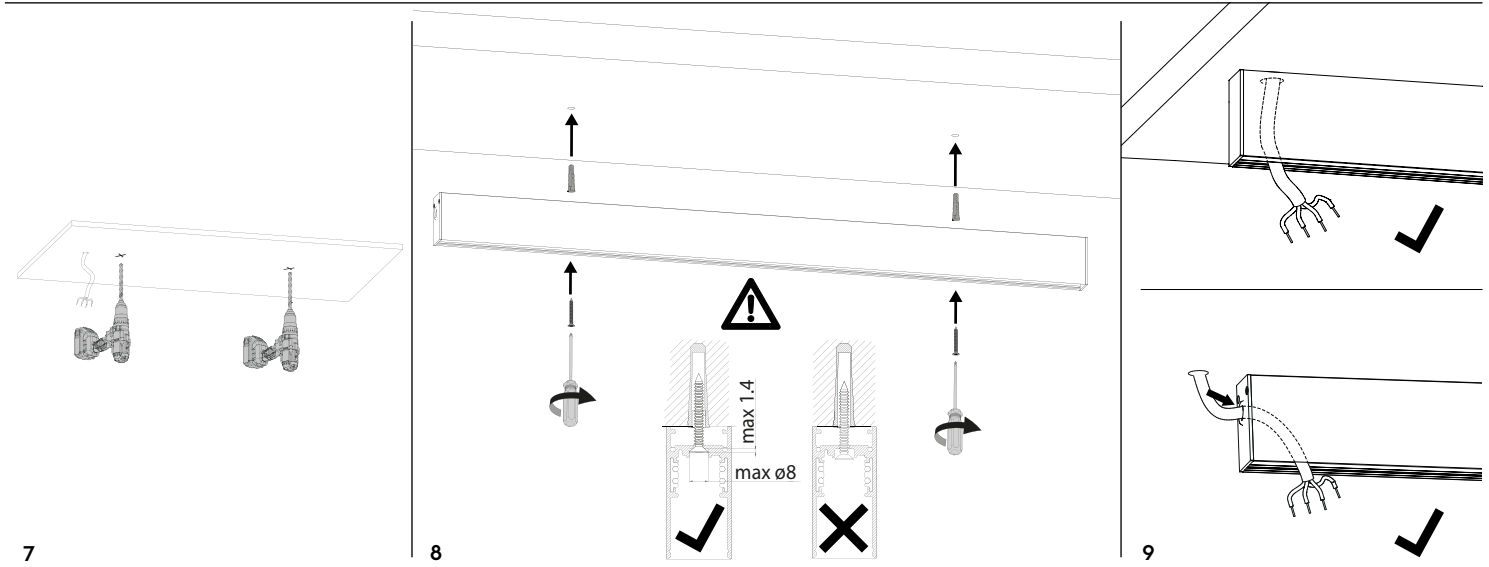
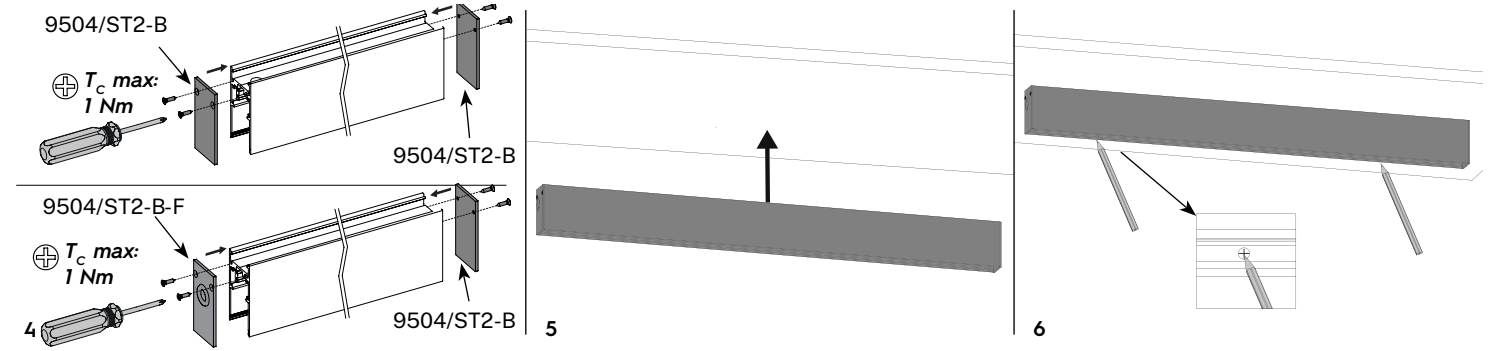
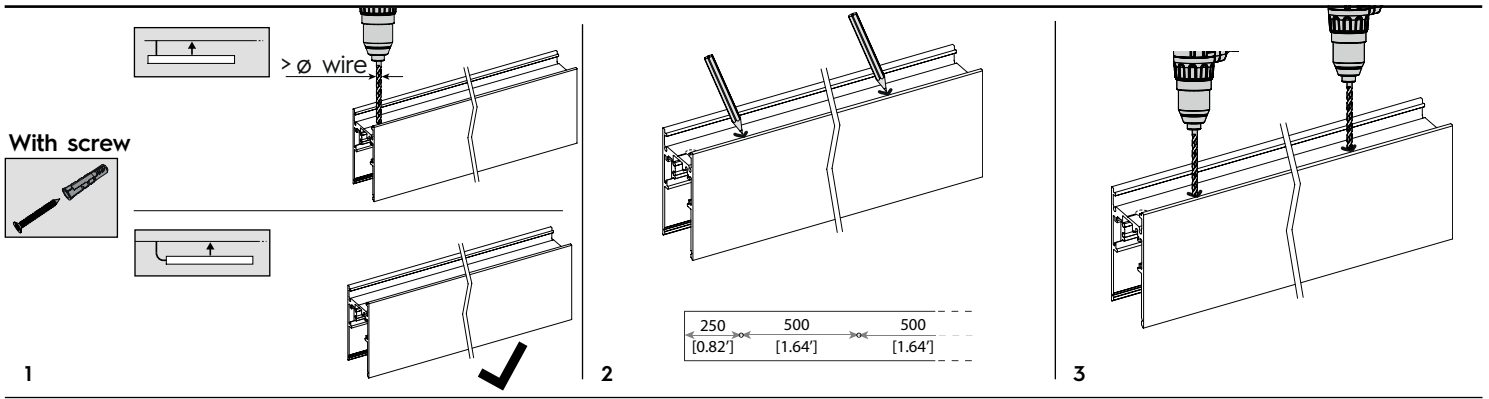
5

S-9500/114

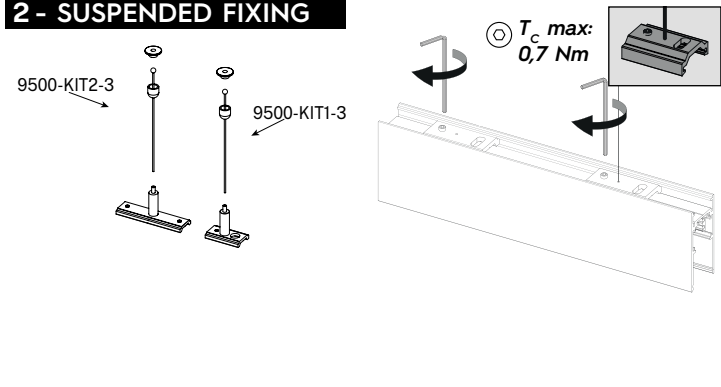
6

7

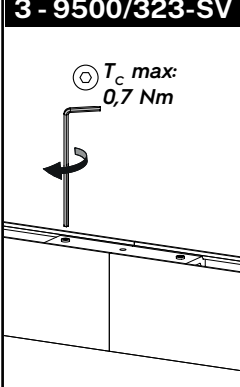
8



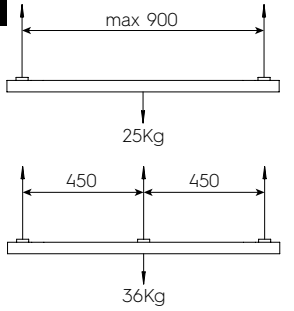
2 - SUSPENDED FIXING



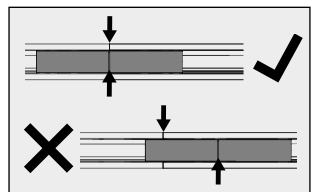
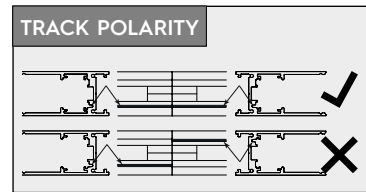
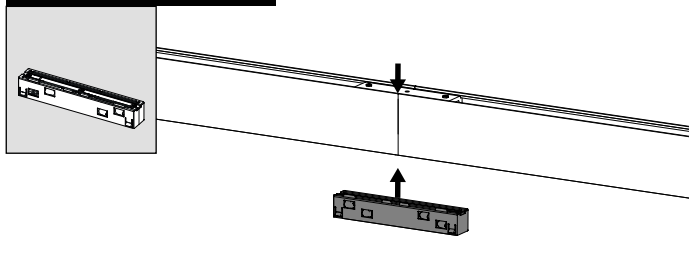
3 - 9500/323-SV



MAX LOAD

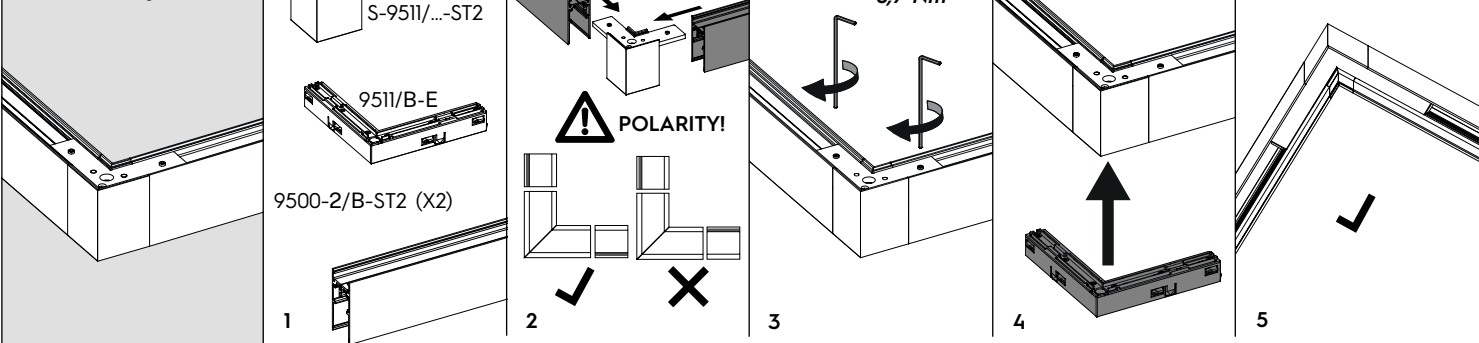


4 - 9503-S/B-E

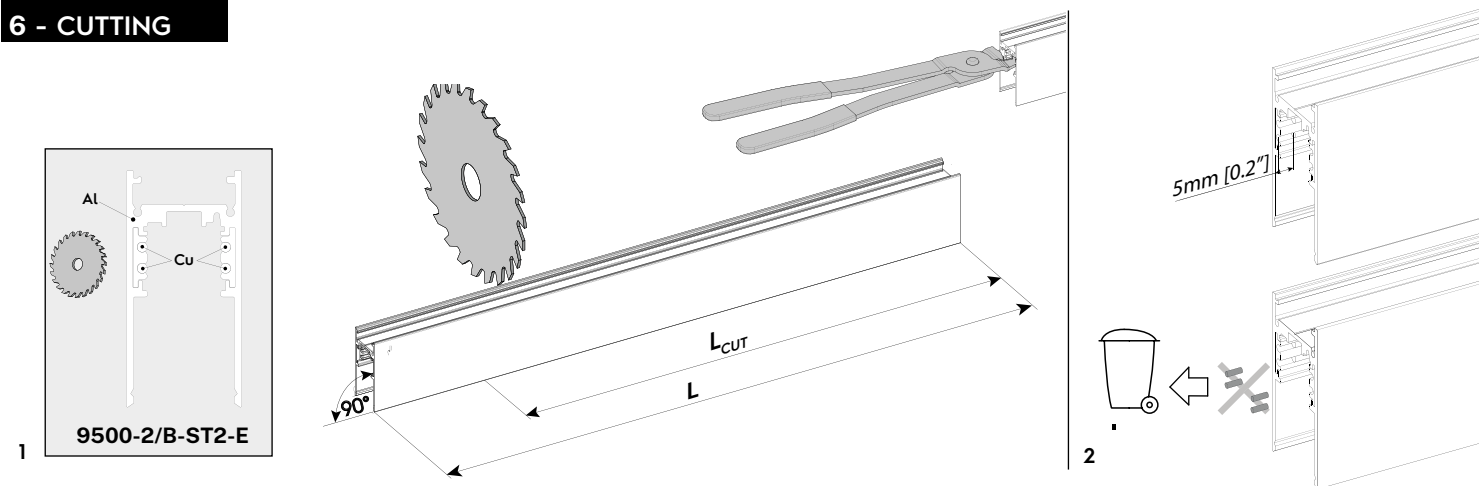


5 - S-9511/B-ST2

Aluminium joint



6 - CUTTING



7 - 9501-S/B-E

